

the LOGUN GUN LAMP

the LOGUN

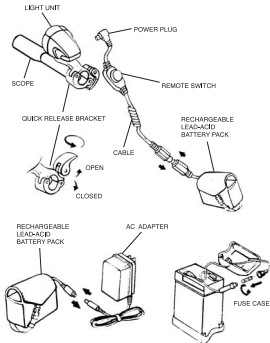
Sole Distributor -
AIRGUNSPORT LTD

Universe House,
Key Industrial Park,
Ransley Road,
Wiltonhall,
West Midlands,
WV13 3YA
England

TEL: 01902 722 164
Fax: 01902 722 880
Service Line Tel: 01902 738 070

www.logun.com
www.airgunsport.com
e-mail: logun@airgunsport.com

THE LOGUN GUN LAMP



MOUNTING INSTRUCTIONS

- Wrap the bracket clamp around the scope as shown.
- Adjust quick release clamp tension on the scope by rotating the lever clockwise to tighten or counter-clockwise to loosen. Close clamp lever to secure.
- Side to side beam adjustment is achieved by loosening the screw on the bottom of the light case
- Insert power cord plug into the light case receptacle and battery pack.
- Fit battery to your belt or trousers.
- Click ON/OFF switch to operate the Logun Lamp

BATTERY PACK

Charge the battery by plugging in the AC adapter to the battery pack power plug (see diagram). The battery is charged completely in 6-12 hours. Do not leave the battery charging for more than 24 hours as it can cause damage to the battery. Running your light until it is weak or dead can reduce the life and run time of your battery. Make sure your battery is fully charged before use.

CHANGING BULB/REFLECTOR

- Make sure bulb and case are cool before attempting to change the bulb.
- Unscrew front bezel ring counter-clockwise and remove bezel
- Carefully pull the bulb/reflector unit out of the case.
- Insert the new bulb/reflector into the light case by lining up and inserting the bulb pins with the light case pin receptacles.
- Replace the front bezel and test the light function.

TROUBLE SHOOTING

If the light is plugged in and switched on but does not function then:

- Make sure the battery is fully charged.
- Check the battery fuse found under the top case of the battery.
- Check cable connections to the battery case and the light case.
- Check for damaged wires, switch and bulb.

If the light is dim or yellow

- The battery may not be fully charged
- Check the cable connections for contaminants.